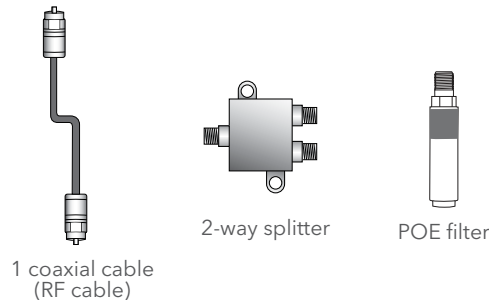


CableCARD™ installation must be completed before the tuning adapter can be installed.

1

Verify contents

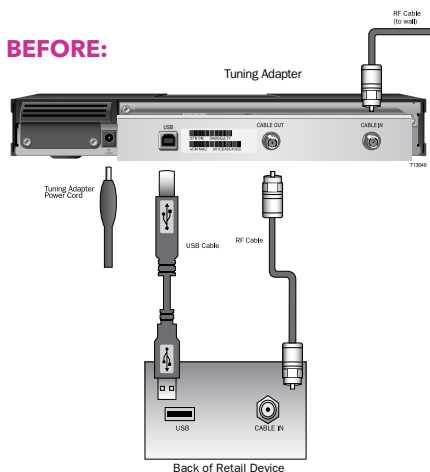


2

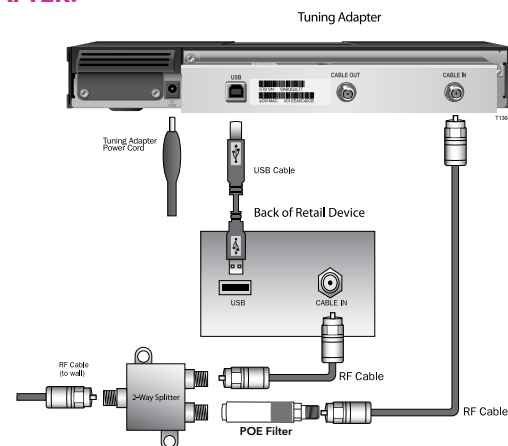
Instructions

1. Turn OFF or unplug the tuning adapter.
2. See the "Before" picture.
 - a. Locate the RF cable that comes from the wall and connects to the tuning adapter. Remove the end of the RF cable that is connected to the tuning adapter IN port and leave the other end connected to the wall.
 - b. Next, locate the second RF cable that connects the tuning adapter to the retail device. Remove the end of the RF cable that is connected to the tuning adapter OUT port and leave the other end connected to the retail device IN port.
 - c. Leave the USB cable connected to the tuning adapter and the retail device.
3. See the "After" picture.
 - a. Connect the RF cable that is connected to the wall outlet to the IN port of the 2-way splitter.
 - b. Connect the POE filter to one of the splitter OUT ports.
 - c. Connect one end of the new RF cable to the open end of the POE filter. Connect the other end of the new RF cable to RF IN (CABLE IN) port of the tuning adapter.
 - d. Connect the disconnected RF cable coming from the retail device to the remaining OUT port of the splitter.
4. Plug the tuning adapter back in and/or turn it ON. Verify that your retail device is working.

BEFORE:



AFTER:



- If you have difficulty activating the tuning adapter, please contact **Technical Support at 1-877-820-8202**.